

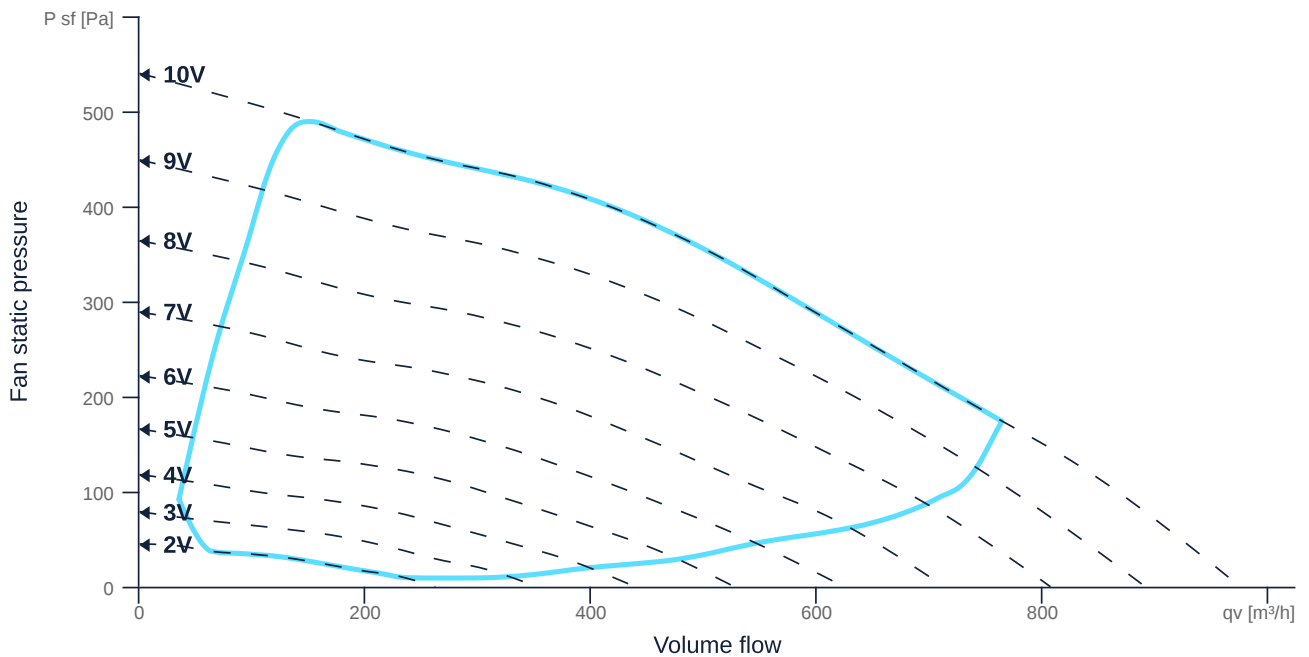
RS 200 EC K 01

154668

- Compact radial fan
- Backward curved impeller
- Sheet steel housing, RAL 7035, powder coated
- High efficiency EC motor, steplessly controllable
- Conveyed medium temperature up to 60 °C in continuous operation
- Internal electronic temperature monitoring



MAP



zur Produktseite

RS 200 EC K 01

154668

ruck

GENERAL DATA

Name	Value	Unit	Formula symbol
Duct size	-		WxHduct
Pipe connection size (DN)	DN200		DN
Electrical protection (entire device)	6 A		fuse
Housing material	Steel		matcasing
Impeller material	Plastic		matimpeller
IP-protection class (entire device)	IPX4		IPcompl
IP-Protection class (terminal box)	IP44		IPebox
Weight	3.87	kg	m
Nominal air flow rate, nominal point m ³ /h	460.8	m ³ /s	qvnom
Nominal external pressure, static	298.1	Pa	pext
Fan type	Radial		Fan _{type}
Category / Installation situation	A		cat
Sound insulation	No		sndins
Rated voltage (entire device)	230	V	U _{rated}
Phases (entire device)	1~		phase

MAXIMAL DATA

Name	Value		Unit	Formula symbol
	50 Hz	60 Hz		
Max. power consumption (device)	121	121	W	P _{ed, max}
Max. operating current (device)	1.03	1.03	A	I _{ed, max}
Max. speed	2900	2900	1/min	n _{max}
Max. stat. efficiency	39	39	%	η _{es}
Max. fan efficiency	40.5	40.5	%	η _e
Max. flowrate	970	970	m ³ /h	q _{v, max}
Max. stat pressure	540	540	Pa	p _{st, max}
Max. medium temperature	60	60	°C	T _{m, max}
Max. environment temperature	60	60	°C	T _{amb, max}
Min. environment temperature	-30	-30	°C	T _{amb, min}



zur Produktseite

RS 200 EC K 01

154668

ruck

MOTOR DATA

Name	Value		Unit	Formula symbol
	50 Hz	60 Hz		
Rated frequency (device)	50.000000			f
Motor type	EC			phase
Control type	stepless-controlled			ctrltype
Installation	ORM (Out)			install
Rotation direction	right			rotation
Isolation class	ISO F			ISOclass
Motor-protection	TEC			protectmotor
Protection class	IP54			IPmotor
Is pole-changeable	No			polexch
Type of power supply	AC 1~			pwrsupmotor
Rated voltage	230		V	U _{rated, f1}
Rated current	0.89		A	I _{rated, f1}
Shaft power	113		W	P _{out, f1}
Speed	2908		1/min	n _{f1}
Efficiency	48.7		%	η _{m, f1}
Cos Phi	0.000000	0.000000		cos φ

PRODUCT INFORMATION

Name	Value	Unit	Formula symbol
Category / Installation situation	A		cat
Fan type	Radial		Fan _{type}

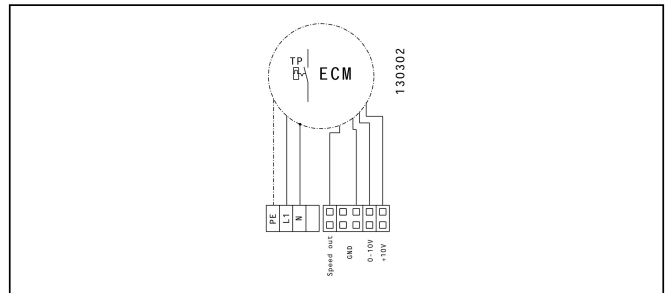
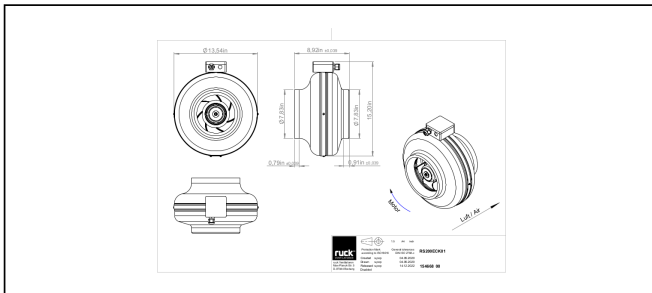
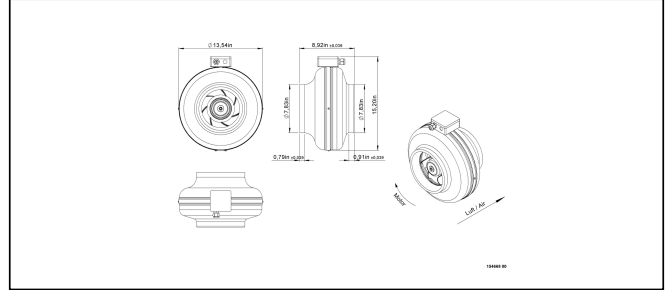
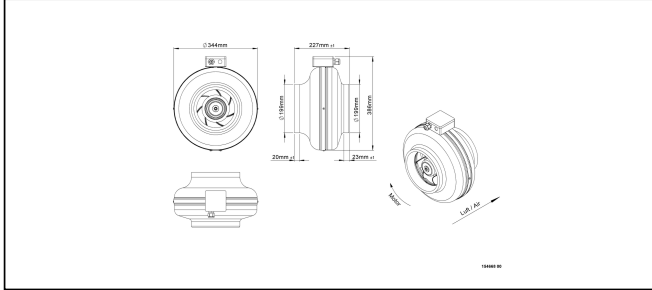


zur Produktseite

RS 200 EC K 01

154668

SCHALTPLÄNE / MASSZEICHNUNGEN



zur Produktseite

MECHANICAL ACCESSORIES

VM 200 | 102650



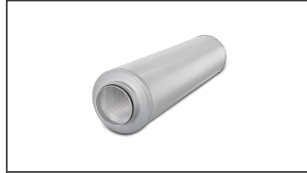
- Fast clamps for sound decoupling and sealing
- Galvanized steel sheet, 5 mm
- Neopren gasket
- 1 Pack = 2 pieces

RSK 200 | 102662



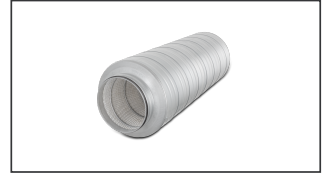
- Back draught shutter for tube fitting
- Galvanized steel sheet housing
- Aluminum flaps

SDF 200 | 102704



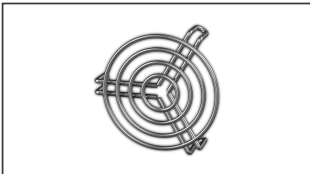
- Flexible tube silencer
- Galvanized steel sheet
- Sound insulation packing 50 mm

SDS 200 | 102719



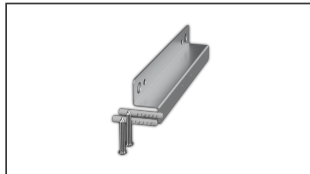
- Rigid tube silencer
- Galvanized steel sheet
- Sound insulation packing 50 mm (mineral wool)

SG 200 01 | 102898



- Protection grille for tube connection
- Galvanized wire

MRS 2 | 110095



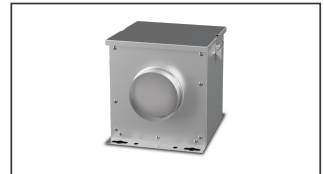
- Mounting bracket
- Galvanized steel sheet
- Includes: Mounting bracket and 2 Phillips screws (6 x 45 mm), 2 dowels (8 x 40 mm)

CLIMASET 01 | 111314



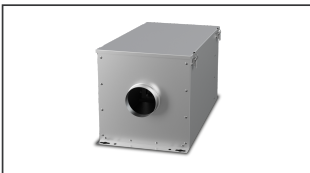
- Climaset
- For differential pressure measurement

FV 200 | 112832



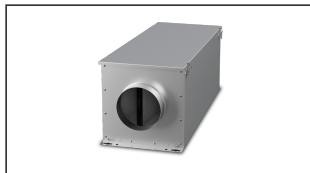
- Air filter box with mat filter ISO Coarse 45 % (G3)
- Toggle-type fastener

FT 200 | 112840



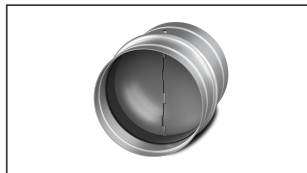
- Air filter box for pocket filter
- Toggle-type fastener
- Galvanized steel sheet housing
- Without filter

FTW 200 | 112853



- Air filter box for pocket filter M5
- Integrated warm water heating coil
- Galvanized steel sheet housing
- Without filter

RSK 200D | 113487



- Back draught shutter for tube fitting
- Galvanized steel sheet housing
- Aluminum flaps
- Integrated gasket



ELECTRICAL ACCESSORIES

GS 03 | 107633



- Device switch
- $U_{max} = 400\text{ V}$, $I_{max} = 25\text{ A}$
- Switching capacity $400\text{ V } 3\text{-} = 5,5\text{ kW}$
- Protection class IP 55

CON P1000 | 115259



- Constant pressure control
- Actual value display possible via optional control unit
- Output 0-10 V DC + FC enable + setpoint reached
- Pressure setting by means of decade switch

SEN CO2 | 126586



- Sensor for variable volume flow control in meeting rooms
- Long-term stable 2-beam infrared cell
- 24 V AC $\pm 20\%$, 15 - 35 V DC
- Protection class IP 30

MTP 20 | 128146



- Potentiometer 10 k Ω
- Switching contact 1A/250V AC - 2,5A/12V DC
- Max. ambient temperature 50 °C
- VDE

MTP 30 | 143289



- Stepped potentiometer 10 k Ω
- Step 1 + 2 settable 10 % - 100 % Vdc
- Step 3 100 % Vdc
- Supply voltage +10 Vdc

MTP 40 | 147359



- Potentiometer 10 k Ω
- Connection in terminal box
- Max. ambient temperature 50 °C
- PU: 20 pieces

SEN AIR | 148641



- Airflow and temperature transducer
- Measuring range temperature 0...+50 °C
- With adjustable switching threshold (air speed)
- Measuring range air velocity up to 20 m/s

MTP 50 | 153133



- Potentiometer with multifunction output
- 230 VAC $\pm 10\%$ / 50-60 Hz
- Selectable output: 1-10 VDC / 2-20 mA / 10-100 % PWM
- Min. and max. output value adjustable

