

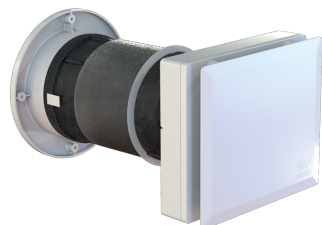
# Technical Data Sheet

CODE 12432

## VORT HRW 60 MONO EVO HCS WIFI



Decentralised heat recovery units



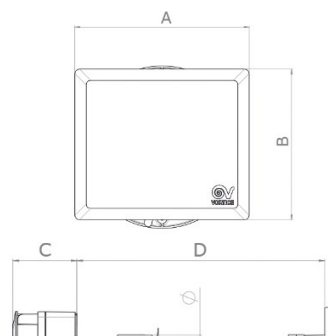
### Certifications



### TECHNICAL AND PERFORMANCE DATA

Frequency (Hz)	50-60	Pressure (mmH2O) – Performance mode	6,1
Insulation class	II°	Pressure (mmH2O) – Quiet mode	4,1
Max absorbed current (A)	0,08	Pressure (Pa) – Boost mode	120
Max absorbed power (W)	8	Pressure (Pa) – High Performance mode	100
Max ambient temperature for continuous operation (°C)	30	Pressure (Pa) – Night mode	15
Nominal diameter (mm)	160	Pressure (Pa) – Performance mode	60
Voltage (V)	220-240	Pressure (Pa) – Quiet mode	40
Weight (Kg)	3,30	Sound power LWA [dB (A)] – Boost mode	62,1
Airflow (m3/h) - Boost mode	60	Sound power LWA [dB(A)] – High Performance mode	56,5
Airflow (m3/h) - High Performance mode	45	Sound power LWA [dB(A)] – Night mode	31,8
Airflow (m3/h) - Night mode	10	Sound power LWA [dB(A)] – Performance mode	51,5
Airflow (m3/h) - Performance mode	35	Sound power LWA [dB(A)] – Quiet mode	44,6
Airflow (m3/h) - Quiet mode	25	Sound pressure at 3m Lp [dB (A)] - Night mode	14,3
Max thermal efficiency (%)	90	Sound pressure at 3m Lp [dB (A)] – Quiet mode	27,1
Pressure (mmH2O) – Boost mode	12,2	Sound pressure at 3m Lp [dB (A)] 3m – Boost mode	44,6
Pressure (mmH2O) – High Performance mode	10,2	Sound pressure at 3m Lp [dB (A)] 3m – High Performance mode	39
Pressure (mmH2O) – Night mode	1,5	Sound pressure at 3m Lp [dB (A)] 3m – Performance mode	33,9

### DIMENSIONS



Ø (mm)	146
Size A (mm)	231
Size B (mm)	200
Size C (mm)	73
Size D (mm)	283

### PER INFORMAZIONI / FOR INFORMATION

#### ITALY

Pre Sales:  
prevendita@vortice-italy.com  
After Sales:  
postvendita@vortice-italy.com

#### UNITED KINGDOM & REP. OF

IRELAND  
Sales Dept:  
sales@vortice.ltd.uk  
Technical Dept:  
technical@vortice.ltd.uk

#### OTHER COUNTRIES

Sales Dept:  
export@vortice-italy.com  
After Sales:  
after-sales@vortice-italy.com

# Technical Data Sheet

CODE 12432

## VORT HRW 60 MONO EVO HCS WIFI



Decentralised heat recovery units

---

### DESCRIPTION

### ACCESSORIES



#### C TEMP

Code 12992



#### C HCS

Code 12994



#### TUBO PVC D.160 L=700 (HRW 20)

Code 22599



#### KIT FTR ISO COARSE 65% (G3) D.127X10

Code 22466



#### MWS

Code 21148



#### RGR

Code 21190



#### WA

Code 21191



#### WSG-INOX

Code 21192



#### WSG-W

Code 21193



#### TRIO-CA IL

Code 21196

### PER INFORMAZIONI / FOR INFORMATION

#### ITALY

Pre Sales:  
prevendita@vortice-italy.com  
After Sales:  
postvendita@vortice-italy.com

#### UNITED KINGDOM & REP. OF IRELAND

Sales Dept:  
sales@vortice.ltd.uk  
Technical Dept:  
technical@vortice.ltd.uk

#### OTHER COUNTRIES

Sales Dept:  
export@vortice-italy.com  
After Sales:  
after-sales@vortice-italy.com