

Alternating shut-off damper

TASU

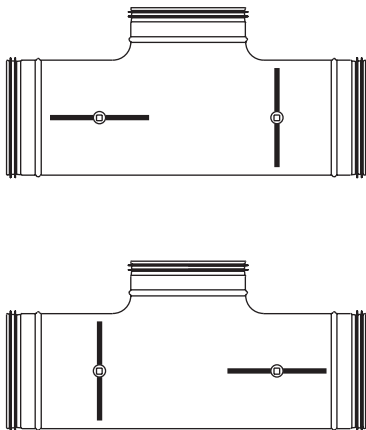


Description

Alternating shut-off damper

Consists of an extended T-piece and two linked DSU dampers.

Can be used for "by pass" ducts. It thereby replaces two conventional dampers + two couplings + one T-piece and is 20–30% shorter.



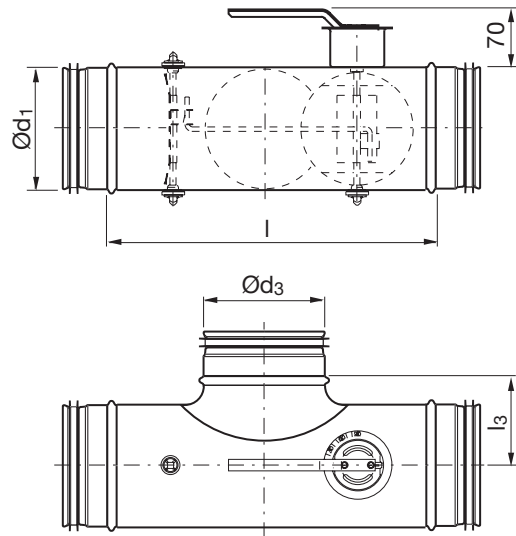
There is a separate assembly, measuring, balancing and maintenance instruction for this product.

Ø 100–400 fullfills pressure class A in closed position.

Ordering example

Product	TASU	160	160
Dimension Ød ₁			
Dimension Ød ₃			

Dimensions



Ød ₁ nom	Ød ₃ nom	l mm	l ₃ mm	m kg	Sealing class past closed blade
100	100	280	65	1,10	0
125	125	345	83	1,50	0
160	160	385	105	2,00	0
200	200	425	125	2,80	0
250	250	520	150	4,10	0
315	315	585	182	5,90	0
400	400	645	225	8,30	0

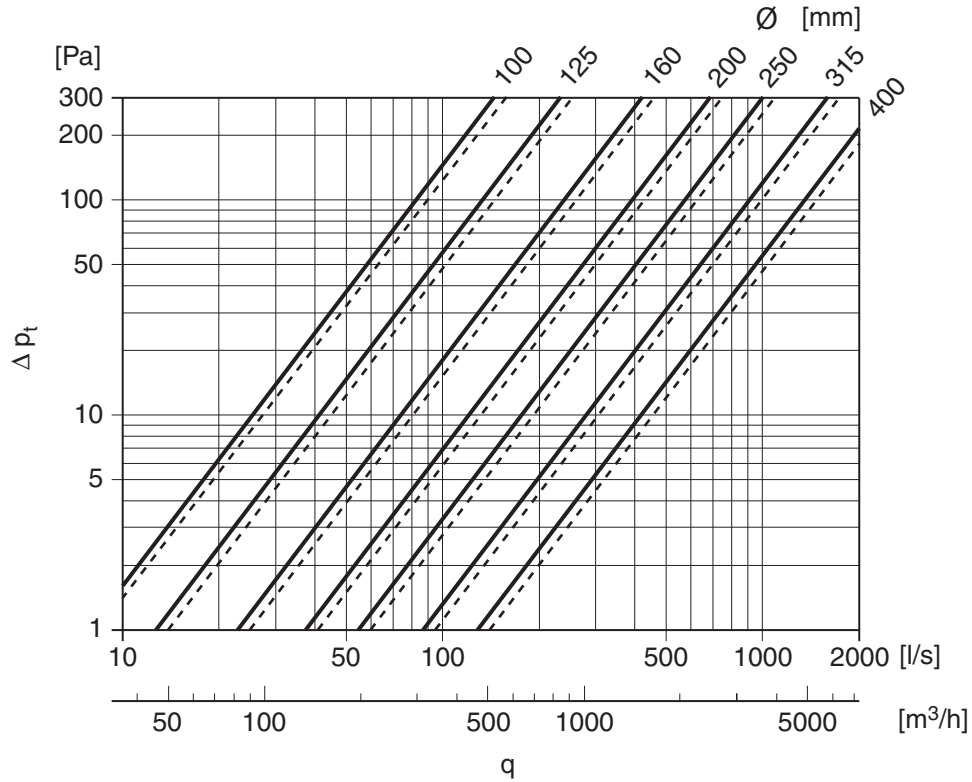
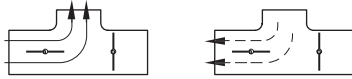
- 1
- 2
- 3
- 4
- 5
- 6
- 7
- 8
- 9
- 10
- 11
- 12
- 13
- 14
- 15
- 16
- 17
- 18

Motorized alternating shut-off dampers

TASU, TATU,
TATBU

Technical data

The dashed pressure drop curves refer to the flow direction in the right picture.



1

2

3

4

5

6

7

8

9

10

11

12

13

14

15

16

17

18